

**SF
LIFE**

SchönhuberFranchi



SALENTO SUMMER
SF LEISURE LIVING FURNISHINGS



SF LIFE

NEWPORT COLLECTION
SUNSET COLLECTION
NEW JALAN COLLECTION
BALI COLLECTION

NEWPORT COLLECTION





OUTDOOR / NEWPORT COLLECTION

SEDIA IMPILABILE / POLTRONCINE IMPILABILI
STACKABLE CHAIR / STACKABLE ARMCHAIRS

DESIGN: ATELIER SF





OUTDOOR / NEWPORT COLLECTION

POLTRONCINA IMPILABILE / TAVOLO QUADRATO
STACKABLE ARMCHAIR / SQUARE TABLE





OUTDOOR / NEWPORT COLLECTION

TAVOLO RETTANGOLARE / TAVOLO QUADRATO
RECTANGULAR TABLE / SQUARE TABLE

DESIGN: ATELIER SF





SUNSET COLLECTION





OUTDOOR / SUNSET COLLECTION

POLTRONCINE IMPILABILI
STACKABLE ARMCHAIRS





OUTDOOR / SUNSET COLLECTION

TAVOLO QUADRATO / TAVOLO ROTONDO / TAVOLO RETTANGOLARE DESIGN: LORENZO BELLINI
SQUARE TABLE / ROUND TABLE / RECTANGULAR TABLE





OUTDOOR / SUNSET COLLECTION

TAVOLINO BASSO / LETTINO DESIGN: LORENZO BELLINI
SIDE TABLE / SUNBED







OUTDOOR / SUNSET COLLECTION

LETTINO / TAVOLINO BASSO DESIGN: LORENZO BELLINI
SUNBED / SIDE TABLE





OUTDOOR / SUNSET COLLECTION

DESIGN: LORENZO BELLINI TAVOLO QUADRATO / TAVOLO RETTANGOLARE / TAVOLO ROTONDO
SQUARE TABLE / RECTANGULAR TABLE / ROUND TABLE





OUTDOOR / SUNSET COLLECTION

POLTRONCINE IMPILABILI DESIGN: LORENZO BELLINI
STACKABLE ARMCHAIRS





JALAN WHITE COLLECTION





OUTDOOR / JALAN / WHITE COLLECTION

SCHUMANN DIVANO / SCHUMANN POLTRONA / SCHUMANN DIVANO 3 POSTI DESIGN: LORENZO BELLINI
SOFA / ARMCHAIR / 3 SEATER SOFA





OUTDOOR / JALAN / WHITE COLLECTION

MOZART POLTRONA / MOZART DIVANO DESIGN: ATELIER SF
MOZART ARMCHAIR / MOZART SOFA





OUTDOOR / JALAN / WHITE COLLECTION

VIVALDI POLTRONA / VIVALDI DIVANO DESIGN: LORENZO BELLINI
VIVALDI ARMCHAIR / VIVALDI SOFA





OUTDOOR / JALAN / WHITE COLLECTION

BIZET TAVOLINO BASSO / BRAHMS TAVOLO BASSO / BIZET TAVOLINO BASSO DESIGN: LORENZO BELLINI
BIZET SIDE TABLE / BRAHMS COFFEE TABLE / BIZET SIDE TABLE





OUTDOOR / JALAN / WHITE COLLECTION

HÄNDEL LETTINO DESIGN: LORENZO BELLINI
HÄNDEL SUNBED



OUTDOOR / JALAN / WHITE COLLECTION

DESIGN: LORENZO BELLINI BEETHOVEN LETTINO
BEETHOVEN SUNBED







OUTDOOR / JALAN / WHITE COLLECTION

BACH POLTRONCINA / BACH SEDIA DESIGN: LORENZO BELLINI
BACH DINING ARMCHAIR / BACH DINING CHAIR



OUTDOOR / JALAN / WHITE COLLECTION

DESIGN: LORENZO BELLINI MASCAGNI SEDIA IMPILABILE / MONTEVERDI SEDIA IMPILABILE
MONTEVERDI POLTRONCINA IMPILABILE / MASCAGNI POLTRONCINA IMPILABILE
MASCAGNI STACKABLE DINING CHAIR / MONTEVERDI STACKABLE DINING CHAIR
MONTEVERDI STACKABLE DINING ARMCHAIR / MASCAGNI STACKABLE DINING ARMCHAIR





OUTDOOR / JALAN / WHITE COLLECTION

GAUGIN SEDIA DESIGN: MATTEO THUN
GAUGIN DINING CHAIR



OUTDOOR / JALAN / WHITE COLLECTION

DESIGN: MATTEO THUN VAN GOGH POLTRONCINA IMPILABILE / VAN GOGH SEDIA IMPILABILE
VAN GOGH STACKABLE DINING ARMCHAIR / VAN GOGH STACKABLE DINING CHAIR





OUTDOOR / JALAN / WHITE COLLECTION

DESIGN: MATTEO THUN MONET POLTRONCINA / RENOIR POLTRONCINA
MONET DINING ARMCHAIR / RENOIR DINING ARMCHAIR





OUTDOOR / JALAN / WHITE COLLECTION

OLIVIA SEDIA IMPILABILE / OLIVIA POLTRONCINA IMPILABILE DESIGN: LORENZO BELLINI
OLIVIA STACKABLE DINING CHAIR / OLIVIA STACKABLE DINING ARMCHAIR





OUTDOOR / JALAN / WHITE COLLECTION

DESIGN: LORENZO BELLINI MAHLER TAVOLO QUADRATO / MAHLER TAVOLO TONDO
MAHLER SQUARE TABLE / MAHLER ROUND TABLE





OUTDOOR / JALAN / WHITE COLLECTION

ELICA BASE COLOR ARGENTO / PIANO QUADRATO
ELICA BASE SILVER COLOUR / SQUARE TOP

DESIGN: LORENZO BELLINI



OUTDOOR / JALAN / WHITE COLLECTION

DESIGN: LORENZO BELLINI PIANO TONDO / ELICA BASE COLOR ARGENTO
ROUND TOP / ELICA BASE SILVER COLOUR





OUTDOOR / JALAN / WHITE COLLECTION

DESIGN: MATTEO THUN SISLEY SGABELLO / CEZANNE SGABELLO
SISLEY BARSTOOL / CEZANNE BARSTOOL



A close-up photograph of a woman with voluminous, wavy, light brown hair. She is smiling warmly and looking down at a laptop screen. The background is slightly out of focus, showing a green cushioned chair and a dark, textured surface. The lighting is soft and natural, highlighting her features.

JALAN TITANIUM COLLECTION



OUTDOOR / JALAN / TITANIUM COLLECTION

MOZART POLTRONA / MOZART DIVANO
MOZART ARMCHAIR / MOZART SOFA



OUTDOOR / JALAN / TITANIUM COLLECTION

DESIGN: LORENZO BELLINI
VIVALDI POLTRONA / VIVALDI DIVANO
VIVALDI ARMCHAIR / VIVALDI SOFA





OUTDOOR / JALAN / TITANIUM COLLECTION

SCHUMANN POLTRONA / SCHUMANN DIVANO / BRAHMS TAVOLO BASSO DESIGN: LORENZO BELLINI
SCHUMANN ARMCHAIR / SCHUMANN SOFA / BRAHMS COFFEE TABLE

OUTDOOR / JALAN / TITANIUM COLLECTION

DESIGN: LORENZO BELLINI VIVALDI POLTRONA / VIVALDI DIVANO / BIZET TAVOLINO BASSO
VIVALDI ARMCHAIR / VIVALDI SOFA / BIZET SIDE TABLE



SF suggerisce il salotto coordinato con 2 poltrone Schumann, un divano a 2 posti Schumann ed il tavolino basso Brahms





OUTDOOR / JALAN / TITANIUM COLLECTION

SCHUMANN DIVANO / SCHUMANN POLTRONA DESIGN: LORENZO BELLINI
SCHUMANN SOFA / SCHUMANN ARMCHAIR





OUTDOOR / JALAN / TITANIUM COLLECTION

BIZET TAVOLINO BASSO / BRAHMS TAVOLO BASSO / BIZET TAVOLINO BASSO DESIGN: LORENZO BELLINI
BIZET SIDE TABLE / BRAHMS COFFEE TABLE / BIZET SIDE TABLE





OUTDOOR / JALAN / TITANIUM COLLECTION

LETTINO HÄNDEL DESIGN: LORENZO BELLINI
HÄNDEL SUNBED





OUTDOOR / JALAN / TITANIUM COLLECTION

HÄNDEL LETTINO / BEETHOVEN LETTINO DESIGN: LORENZO BELLINI
HÄNDEL SUNBED / BEETHOVEN SUNBED







OUTDOOR / JALAN / TITANIUM COLLECTION

VAN GOGH SEDIA IMPILABILE / VAN GOGH POLTRONCINA IMPILABILE DESIGN: MATTEO THUN
VAN GOGH STACKABLE DINING CHAIR / VAN GOGH STACKABLE DINING ARMCHAIR





OUTDOOR / JALAN / TITANIUM COLLECTION

BACH SEDIA / BACH POLTRONCINA DESIGN: LORENZO BELLINI
BACH DINING CHAIR / BACH DINING ARMCHAIR





MASCAGNI SEDIA IMPILABILE / MONTEVERDI SEDIA IMPILABILE DESIGN: MATTEO THUN
MONTEVERDI POLTRONCINA IMPILABILE / MASCAGNI POLTRONCINA IMPILABILE
MASCAGNI STACKABLE DINING CHAIR / MONTEVERDI STACKABLE DINING CHAIR
MONTEVERDI STACKABLE DINING ARMCHAIR / MASCAGNI STACKABLE DINING ARMCHAIR



DESIGN: LORENZO BELLINI OLIVIA SEDIA IMPILABILE / OLIVIA POLTRONCINA IMPILABILE
OLIVIA STACKABLE DINING CHAIR / OLIVIA STACKABLE DINING ARMCHAIR





OUTDOOR / JALAN / TITANIUM COLLECTION

ELICA BASE COLOR ANTRACITE / RIVESTIMENTO IN JALAN / PIANO QUADRATO DESIGN: LORENZO BELLINI
ELICA BASE ANTHRACITE COLOUR / WIVED JALAN FOR TABLE COLOM / SQUARE TOP



OUTDOOR / JALAN / TITANIUM COLLECTION

DESIGN: LORENZO BELLINI MAHLER TAVOLO QUADRATO / MAHLER TAVOLO TONDO
MAHLER SQUARE TABLE / MAHLER ROUND TABLE





OUTDOOR / JALAN / TITANIUM COLLECTION

SISLEY SGABELLO / CEZANNE SGABELLO DESIGN: MATTEO THUN
SISLEY BARSTOOL / CEZANNE BARSTOOL





JALAN PERLA COLLECTION

OUTDOOR / JALAN / PERLA COLLECTION

DESIGN: SIMONE MICHELI HUG POLTRONA A POZZETTO / HUG POLTRONA
HUG SMALL ARMCHAIR / HUG ARMCHAIR





OUTDOOR / JALAN / PERLA COLLECTION

HUG DIVANO / HUG DIVANO TRE POSTI / HUG TAVOLINO DESIGN: SIMONE MICHELI
HUG SOFA / HUG SOFA 3-SEATER / HUG SIDE TABLE





OUTDOOR / JALAN / PERLA COLLECTION

HUG PARETE DIVISORIA A TRE MODULI / BACH SEDIA DESIGN: SIMONE MICHELI
HUG PARTITION WITH 3 MODULES / BACH DINING CHAIR





OUTDOOR / JALAN / PERLA COLLECTION

DESIGN: SIMONE MICHELI HUG CESTO PORTA BIANCHERIA / HUG CARRELLO
HUG LINEN BASKET / HUG TROLLEY





OUTDOOR / JALAN / PERLA COLLECTION

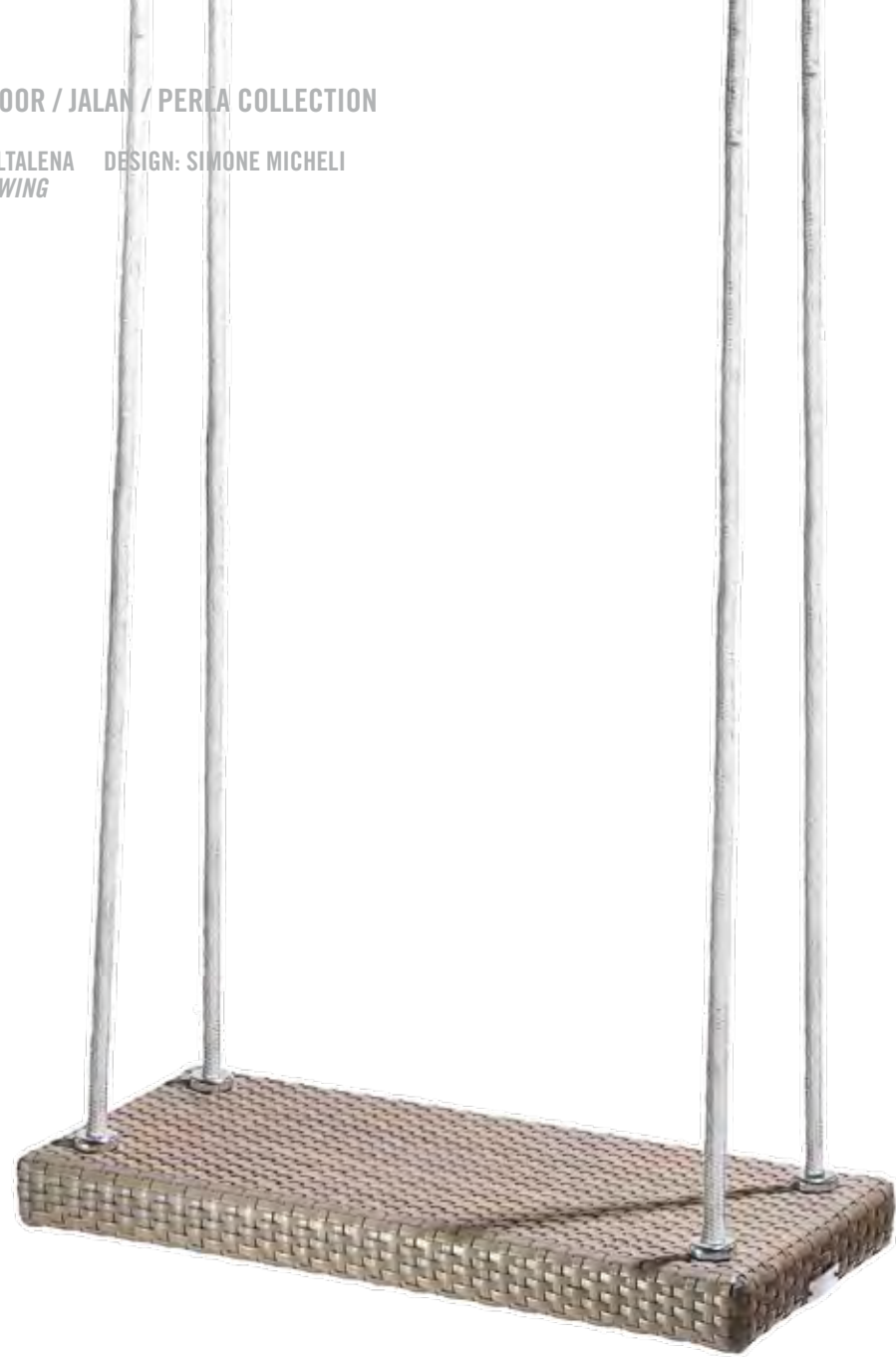
HUG LETTINO / HUG TAVOLINO DESIGN: SIMONE MICHELI
HUG SUNBED / HUG SIDE TABLE





OUTDOOR / JALAN / PERLA COLLECTION

HUG ALTALENA DESIGN: SIMONE MICHELI
HUG SWING



A photograph of three women sitting on a large, dark brown wicker daybed outdoors at night. The daybed has a curved, arched backrest and is filled with white cushions. The woman on the left is wearing a light purple dress and black high-heeled shoes. The woman in the middle is wearing a black dress and black high-heeled shoes. The woman on the right is wearing a black strapless dress and black high-heeled sandals. They are all smiling and looking towards the camera. The background shows a white wall and some greenery. A bright light source is visible behind the women, creating a lens flare effect. The text "JALAN DESIGN COLLECTION" is overlaid on the image in white, bold, sans-serif font.

JALAN DESIGN COLLECTION



OUTDOOR / JALAN / DESIGN COLLECTION

LADYBUG DIVANO / LADYBUG POLTRONA
LADYBUG SOFA / LADYBUG ARMCHAIR

DESIGN: LUCA TRAZZI





OUTDOOR / JALAN / DESIGN COLLECTION

POUFF / CLASSIC DIVANO DESIGN: LUCA TRAZZI
POUFF / CLASSIC SOFA



OUTDOOR / JALAN / DESIGN COLLECTION

DESIGN: LUCA TRAZZI CLASSIC SMALL POLTRONA
CLASSIC SMALL LOUNGE CHAIR





BALI COLLECTION

INDOOR / BALI COLLECTION

DESIGN: LORENZO BELLINI DIVANO
SOFA





INDOOR / BALI COLLECTION

POLTRONA / TAVOLINO DESIGN: LORENZO BELLINI
ARMCHAIR / COFFEE TABLE





Il Batyline è una fibra di poliestere rivestita di PVC, un tessuto indeformabile, estensibile e non strappabile con una solidità meccanica eccezionale e un'elevata resistenza chimica. Il rivestimento sintetico è garante di una resistenza eccezionale ai raggi UV e alle condizioni climatiche. Dato che non assorbe l'umidità, questo materiale si asciuga rapidamente, si macchia difficilmente ed è facile da pulire.

Batyline is a PVC-coated polyester fibre, a warp-proof, tear-proof, stretch fabric that boasts outstanding mechanical solidity and high chemical resistance. The synthetic coating guarantees excellent resistance to UV rays and climatic conditions. As it does not absorb moisture, the material dries fast, is difficult to soil and easy to clean.

Batyline ist eine PVC-beschichtete Polyesterfaser, ein dehnbarer, form- und reißfester, Stoff mit einer außerordentlichen mechanischen Festigkeit und einer hohen chemischen Resistenz.

Die synthetische Beschichtung gewährleistet eine hohe UV-Beständigkeit und Wetterfestigkeit. Da keine Feuchtigkeit aufgenommen wird, trocknet dieses Material schnell, verschmutzt nur schwer und lässt sich leicht reinigen.

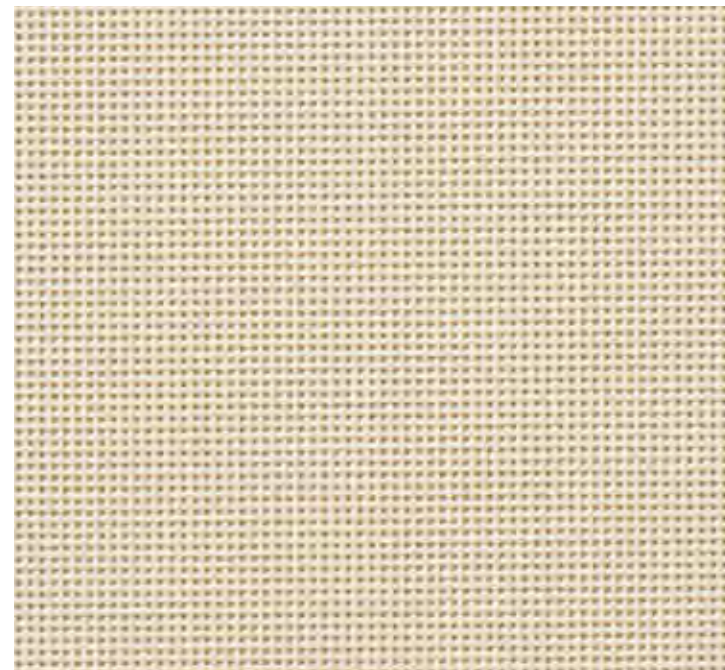
Le Batyline est une fibre de polyester enduite de PVC, un tissu indéformable, extensible et qui ne se déchire pas, doté d'une solidité mécanique exceptionnelle et d'une résistance chimique très élevée. Le revêtement synthétique garantit une résistance exceptionnelle aux rayons UV et aux conditions climatiques. Ce matériau, qui n'absorbe pas l'humidité, sèche rapidement, se salit difficilement et se nettoie très facilement.

MANUTENZIONE:
SI PULISCE FACILMENTE CON ACQUA E UN SAPONE NON ABRASIVO.
EVITARE ASSOLUTAMENTE I PRODOTTI ABRASIVI E I SOLVENTI.

MAINTENANCE INSTRUCTIONS:
EASY TO CLEAN USING WATER AND NON-ABRASIVE SOAP.
NEVER USE ABRASIVE PRODUCTS OR SOLVENTS.

PFLEGE:
EINFACH MIT WASSER UND MILDER SEIFE REINIGEN.
KEINE SCHEUER- ODER LÖSUNGSMITTEL VERWENDEN.

ENTRETIEN:
SE NETTOIE FACILEMENT À L'EAU ADDITIONNÉE D'UN DÉTERGENT NON ABRASIF.
ÉVITER ABSOLUMENT LES PRODUITS ABRASIFS ET LES SOLVANTS.



VANILLA (B10)



SEDUTE IMPILABILI CON STRUTTURA IN ACCIAIO SATINATO, SEDUTA E SCHIENALE IN FIBRA DI BATYLINE. BRACCIOLI RIVESTITI IN TEAK

STACKABLE CHAIRS AND ARMCHAIRS WITH SATIN STEEL STRUCTURE, SEAT AND BACKREST IN BATYLINE FIBRE. ARMRESTS COVERED WITH TEAK

STAPELBARE STÜHLE UND ARMLEHNSTÜHLE MIT SATINIERTER STAHLSTRUKTUR, SITZ UND RÜCKLEHNE IN BATYLINE-TEXTIL. ARMLEHNEN AUS TEAK BESCHICHTET

SEANCES EMPILABLES AVEC STRUCTURE EN ACIER SATINÉ, ASSISE ET DOSSIER EN FIBRE BATYLINE. BRAS RECOUVERTS EN TEAK



TAVOLI CON PIANO IN LAMELLARE DI TEAK SPESSORE 5 CM, COLONNA A SEZIONE QUADRA IN TEAK E BASAMENTO QUADRATO IN ACCIAIO CON FINITURA DA ESTERNO E PIEDINI REGOLABILI

TABLES WITH LAMELLAR TEAK SURFACE, 5 CENTIMETRES THICK, TEAK SQUARE SECTION COLUMN AND STEEL SQUARE BASE WITH OUTER FINISH AND ADJUSTABLE FEET

TISCHE MIT VERBUNDHOLZPLATTE AUS TEAK, STÄRKE 5 CM, QUADRATISCHE SÄULE AUS TEAK UND QUADRATISCHER STAHLSOCKEL MIT AUSSENFINISH UND HÖHENVERSTELLBAREN TISCHFÜSSEN

TABLES AVEC PLAN EN LAMELLES DE TECK D'UNE ÉPAISSEUR DE 5 CM, COLONNE À SECTION CARRÉE EN TECK ET BASE CARRÉE EN ACIER AVEC FINITION D'EXTÉRIEUR ET PIEDS ADJUSTABLES



TAVOLO A 4 GAMBE IN LAMELLARE DI TEAK

LAMELLAR TEAK TABLE WITH 4 LEGS

TISCH AUS VERBUNDHOLZ AUS TEAK MIT 4 BEINEN

TABLE 4 JAMBES EN LAMELLES DE TECK

batyline[®]
by FERRARI

**NEWPORT**

SEDA IMPILABILE
STACKABLE DINING CHAIR
STAPELBARER STUHL
CHAISE EMPILABLE

W D H SH
47 x 53 x 83 (45) cm

K100...
(COD. HOME FURNISHING)

C58100B10
(COD. HOSPITALITY DIVIS.)

**NEWPORT**

POLTRONCINA IMPILABILE
STACKABLE ARMCHAIR
STAPELBARER ARMLEHNSTUHL
FAUTEUIL EMPILABLE

W D H SH
57 x 57 x 82,5 (45) cm

K110...
(COD. HOME FURNISHING)

C58105B10
(COD. HOSPITALITY DIVIS.)

**NEWPORT**

POLTRONCINA IMPILABILE
STACKABLE ARMCHAIR
STAPELBARER ARMLEHNSTUHL
FAUTEUIL EMPILABLE

W D H SH
56 x 66 x 87 (45) cm

K120...
(COD. HOME FURNISHING)

C58110B10
(COD. HOSPITALITY DIVIS.)

**NEWPORT**

TAVOLO QUADRATO
SQUARE TABLE
QUADRATISCHER ESSTISCH
TABLE CARRÉE

W D H
65 x 65 x 74 cm

K130
(COD. HOME FURNISHING)

C5811500
(COD. HOSPITALITY DIVIS.)

**NEWPORT**

TAVOLO QUADRATO
SQUARE TABLE
QUADRATISCHER ESSTISCH
TABLE CARRÉE

W D H
85 x 85 x 74 cm

K140
(COD. HOME FURNISHING)

C5812000
(COD. HOSPITALITY DIVIS.)

**NEWPORT**

TAVOLO RETTANGOLARE
RECTANGULAR TABLE
RECHTECKIGER ESSTISCH
TABLE RECTANGULAIRE

W D H
65 x 85 x 74 cm

K150
(COD. HOME FURNISHING)

C5812500
(COD. HOSPITALITY DIVIS.)

**NEWPORT**

TAVOLO RETTANGOLARE
RECTANGULAR TABLE
RECHTECKIGER ESSTISCH
TABLE RECTANGULAIRE

W D H
200 x 100 x 73 cm

K160
(COD. HOME FURNISHING)

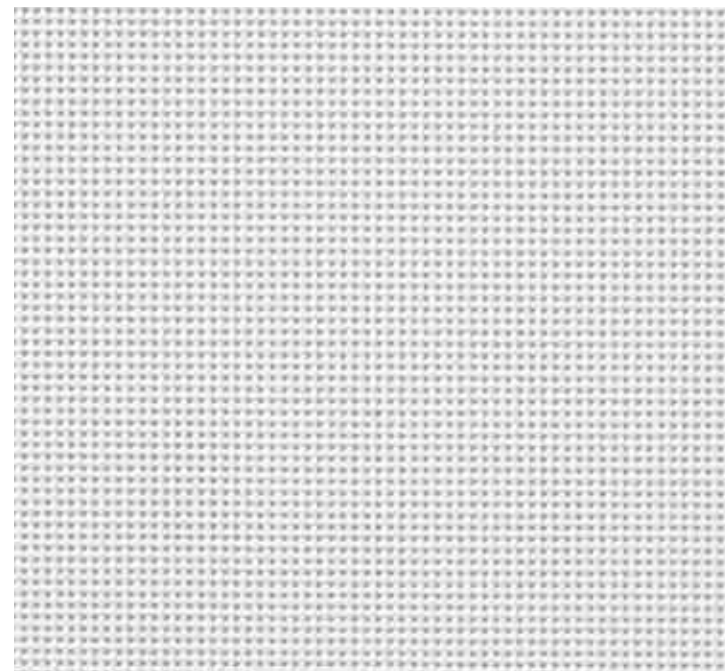
C5813000
(COD. HOSPITALITY DIVIS.)

Il Batyline è una fibra di poliestere rivestita di PVC, un tessuto indeformabile, estensibile e non strappabile con una solidità meccanica eccezionale e un'elevata resistenza chimica. Il rivestimento sintetico è garante di una resistenza eccezionale ai raggi UV e alle condizioni climatiche. Dato che non assorbe l'umidità, questo materiale si asciuga rapidamente, si macchia difficilmente ed è facile da pulire.

Batyline is a PVC-coated polyester fibre, a warp-proof, tear-proof, stretch fabric that boasts outstanding mechanical solidity and high chemical resistance. The synthetic coating guarantees excellent resistance to UV rays and climatic conditions. As it does not absorb moisture, the material dries fast, is difficult to soil and easy to clean.

Batyline ist eine PVC-beschichtete Polyesterfaser, ein dehnbarer, form- und reißfester, Stoff mit einer außerordentlichen mechanischen Festigkeit und einer hohen chemischen Resistenz. Die synthetische Beschichtung gewährleistet eine hohe UV-Beständigkeit und Wetterfestigkeit. Da keine Feuchtigkeit aufgenommen wird, trocknet dieses Material schnell, verschmutzt nur schwer und lässt sich leicht reinigen.

Le Batyline est une fibre de polyester enduite de PVC, un tissu indéformable, extensible et qui ne se déchire pas, doté d'une solidité mécanique exceptionnelle et d'une résistance chimique très élevée. Le revêtement synthétique garantit une résistance exceptionnelle aux rayons UV et aux conditions climatiques. Ce matériau, qui n'absorbe pas l'humidité, sèche rapidement, se salit difficilement et se nettoie très facilement.



SNOWWHITE (B23)



SHARKSKIN (B20)

MANUTENZIONE:
SI PULISCE FACILMENTE CON ACQUA E UN SAPONE NON ABRASIVO.
EVITARE ASSOLUTAMENTE I PRODOTTI ABRASIVI E I SOLVENTI.

MAINTENANCE INSTRUCTIONS:
EASY TO CLEAN USING WATER AND NON-ABRASIVE SOAP.
NEVER USE ABRASIVE PRODUCTS OR SOLVENTS.

PFLEGE:
EINFACH MIT WASSER UND MILDER SEIFE REINIGEN.
KEINE SCHEUER- ODER LÖSUNGSMITTEL VERWENDEN.

ENTRETIEN:
SE NETTOIE FACILEMENT À L'EAU ADDITIONNÉE D'UN DÉTERGENT NON ABRASIF.
ÉVITER ABSOLUMENT LES PRODUITS ABRASIFS ET LES SOLVANTS.

batyline[®]
by FERRARI



SEDUTE CON STRUTTURA IN ALLUMINIO VERNICIATO A SEZIONE QUADRA SPESSORE 2 MM, SEDUTA E SCHIENALE IN FIBRA DI BATYLINE

ARMCHAIRS WITH STRUCTURE IN PAINTED ALUMINIUM SQUARE SECTION 2 MM THICK SECTION, SEAT AND BACKREST IN BATYLINE FIBRE

ARMLEHNSTÜHLE MIT GESTELL AUS LACKIERTEN QUADRATISCHEN ALUMINIUMPROFILIEN 2 MM STARK, SITZFLÄCHE UND LEHNE AUS BATYLINE-TEXTIL

FAUTEUILS AVEC STRUCTURE EN ALUMINIUM VERNI À SECTION CARRÉE ÉPAISSEUR 2 MM, ASSISE ET DOSSIER EN FIBRE DE BATYLINE



TAVOLI CON STRUTTURA IN ALLUMINIO VERNICIATO A SEZIONE SPESSORE 2 MM E PIANO IN TEAK

TABLES WITH STRUCTURE IN PAINTED ALUMINIUM 2 MM THICK AND TOP IN TEAK

TISCHE MIT GESTELL AUS LACKIERTEN QUADRATISCHEN 2 MM STARK UND PLATTE AUS TEAK

TABLES AVEC STRUCTURE EN ALUMINIUM VERNI À SECTION ÉPAISSEUR 2 MM ET PLATEAU EN TEAK



STRUTTURA IN ALLUMINIO VERNICIATO A SEZIONE RETTANGOLARE SPESSORE 2 MM, SEDUTA E SCHIENALE RECLINABILE IN FIBRA DI BATYLINE

STRUCTURE IN PAINTED ALUMINIUM RECTANGULAR SECTION 2 MM THICK, SEAT AND RECLINABLE BACKREST IN BATYLINE FIBRE

GESTELL AUS LACKIERTEN RECHTECKIGEN ALUMINIUMPROFILIEN 2 MM STARK, SITZFLÄCHE UND VERSTELLBARE RÜCKENLEHNE AUS BATYLINE-TEXTIL

STRUCTURE EN ALUMINIUM VERNI À SECTION RECTANGULAIRE ÉPAISSEUR 2 MM, ASSISE ET DOSSIER EN FIBRE DE BATYLINE

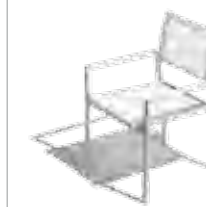


TAVOLO CON STRUTTURA IN ALLUMINIO VERNICIATO A SEZIONE RETTANGOLARE SPESSORE 2 MM PIANO IN ALLUMINIO

TABLE WITH STRUCTURE IN PAINTED ALUMINIUM RECTANGULAR SECTION 2 MM THICK AND TOP IN ALUMINIUM

TISCH MIT GESTELL AUS LACKIERTEN RECHTECKIGEN ALUMINIUMPROFILIEN 2 MM STARK UND PLATTE AUS ALUMINIUM

TABLE AVEC STRUCTURE EN ALUMINIUM VERNI À SECTION RECTANGULAIRE ÉPAISSEUR 2 MM ET PLATEAU EN ALUMINIUM

**SUNSET**

POLTRONCINA IMPILABILE
STACKABLE ARMCHAIR
STAPELBARER ARMLEHNSTUHL
FAUTEUIL EMPILABLE

W D H SH
59,5 x 61 x 85 (45) cm
COL. (B23) (B20)

K200...
(COD. HOME FURNISHING)

C58130...
(COD. HOSPITALITY DIVIS.)

**SUNSET**

POLTRONCINA IMPILABILE
STACKABLE ARMCHAIR
STAPELBARER ARMLEHNSTUHL
FAUTEUIL EMPILABLE

W D H SH
63 x 66 x 91 (45) cm
COL. (B23) (B20)

K210...
(COD. HOME FURNISHING)

C58135...
(COD. HOSPITALITY DIVIS.)

**SUNSET**

TAVOLO QUADRATO
SQUARE TABLE
QUADRATISCHER ESSTISCH
TABLE CARRÉE

W D H
80 x 80 x 72 cm
COL. (20) (23)

K220...
(COD. HOME FURNISHING)

C58140...
(COD. HOSPITALITY DIVIS.)

**SUNSET**

TAVOLO RETTANGOLARE
RECTANGULAR TABLE
RECHTECKIGER ESSTISCH
TABLE RECTANGULAIRE

W D H
80 x 60 x 72
COL. (20) (23)

K230...
(COD. HOME FURNISHING)

C58145...
(COD. HOSPITALITY DIVIS.)

**SUNSET**

LETTINO
SUNBED
SONNENLIEGE
CHAISE LONGUE

W D H SH
64.5 x 196 x 91 (34) cm
COL. (B23) (B20)

K250...
(COD. HOME FURNISHING)

C58155...
(COD. HOSPITALITY DIVIS.)

**SUNSET**

TAVOLINO BASSO
SIDE TABLE
BEISTELLTISCH
TABLE D'APPOINT

W D H
50 x 50 x 45
COL. (20) (23)

K260...
(COD. HOME FURNISHING)

C58160...
(COD. HOSPITALITY DIVIS.)

**SUNSET**

TAVOLO ROTONDO
ROUND TABLE
RUNDER ESSTISCH
TABLE RONDE

Ø H
60 x 72 cm
COL. (20) (23)

K270...
(COD. HOME FURNISHING)

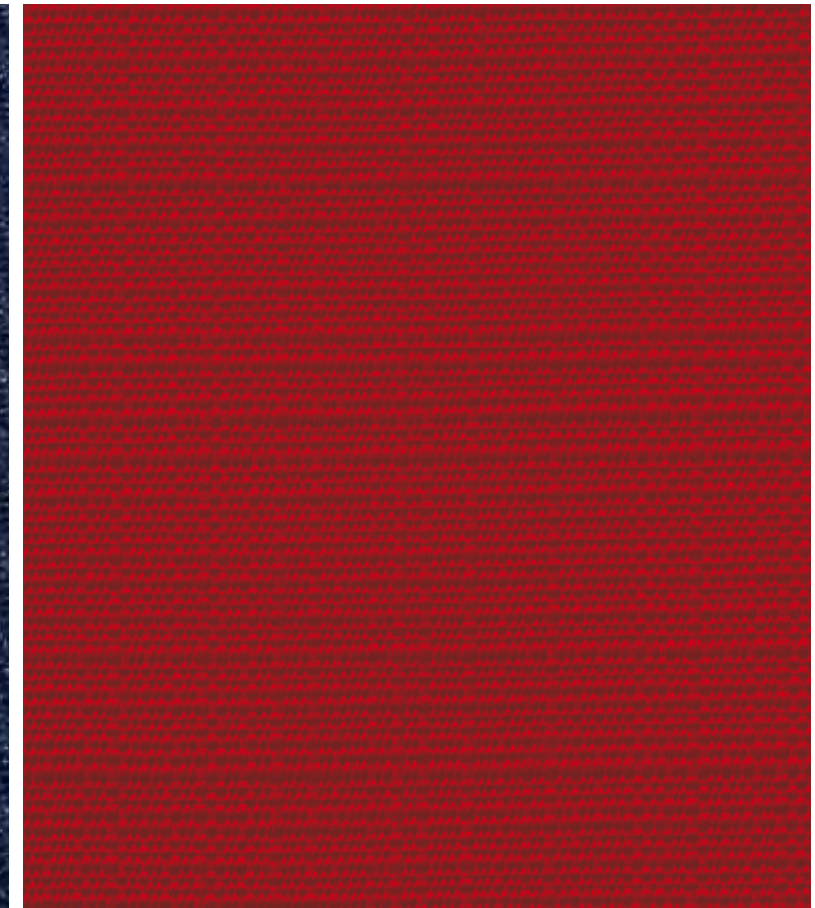
C58165...
(COD. HOSPITALITY DIVIS.)

Una collezione creata e realizzata in esclusiva per Schönhuber Franchi.
 Tessuti realizzati con la fibra Dralon® (acrilico 100%), che ne garantisce resistenza e varietà di utilizzo ricreando la trama naturale del cotone.
 Questi tessuti dai colori e dalle fantasie esclusive sono idrorepellenti ed inalterabili, rivestono imbottiti di poliuretano espanso, studiati da esperti ergonomi per garantire il massimo del benessere posturale e della funzionalità senza sacrificare il piacere estetico.

A collection designed and made exclusively for Schönhuber Franchi.
 Fabrics made using Dralon® (100% acrylic) fibre, for guaranteed resistance and variety of use with a yarn that recreates the natural texture of cotton.
 These water-repellent, warp-proof fabrics, with their exclusive colours and patterns, cover expanded polyurethane padding, designed by expert ergonomists to guarantee optimum postural comfort and functionality without forgoing aesthetic pleasure.



NAVY (C32)

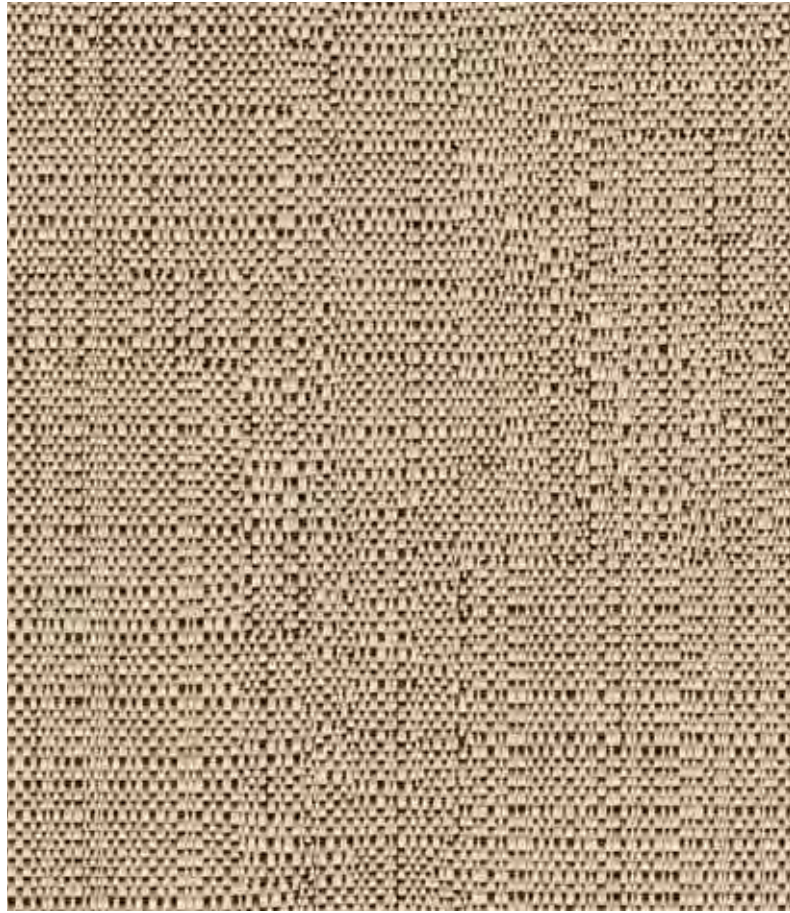


SCARLET (C31)

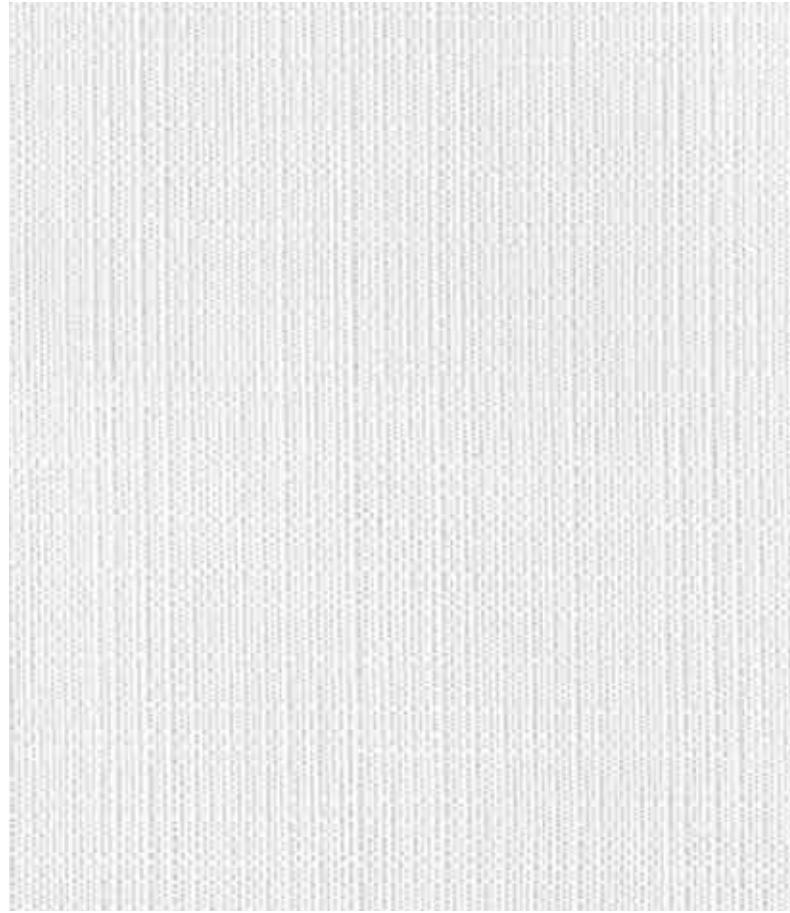
100%PC (DRALON) IMBOTTITO: 100% POLIURETANO ESPANSO
 RESISTENZA ALLA LUCE 6/7 MOLTO BUONA RESISTENZA AL CLORO 4/5 MOLTO BUONA



I COLORI DEI TESSUTI SONO INDICATIVI E SOGGETTI ALLE VARIAZIONI TIPICHE DELLE LAVORAZIONI SU TESSUTO.
 COLORS OF TEXTILES ARE JUST REPRESENTATIVE AND CAN LOOK DIFFERENT ACCORDING TO TEXTILE MANUFACTURING.
 DIE FARBTÖNE DER STOFFE KÖNNEN JE NACH VERARBEITUNG VARIIEREN.
 LES COULEURS DES TISSUS SONT INDICATIVES ET SUJET AUX VARIATIONS TYPICIQUES DE LA TRANSFORMATION SUR LE TISSU.



NOCCIOLA (C12)



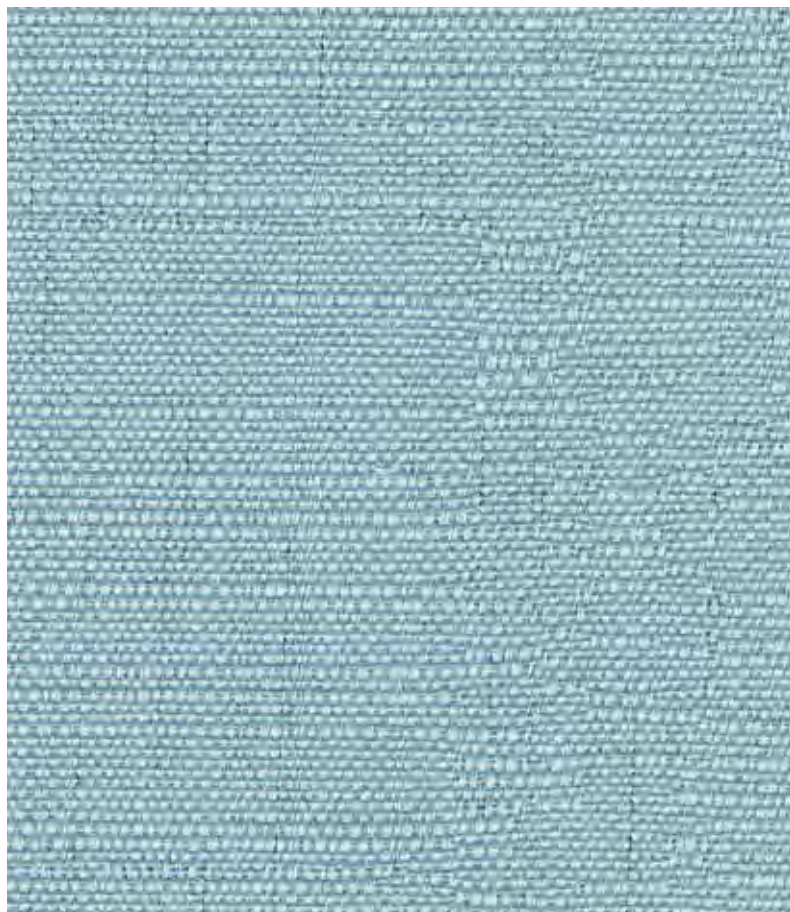
BIANCO (C30)



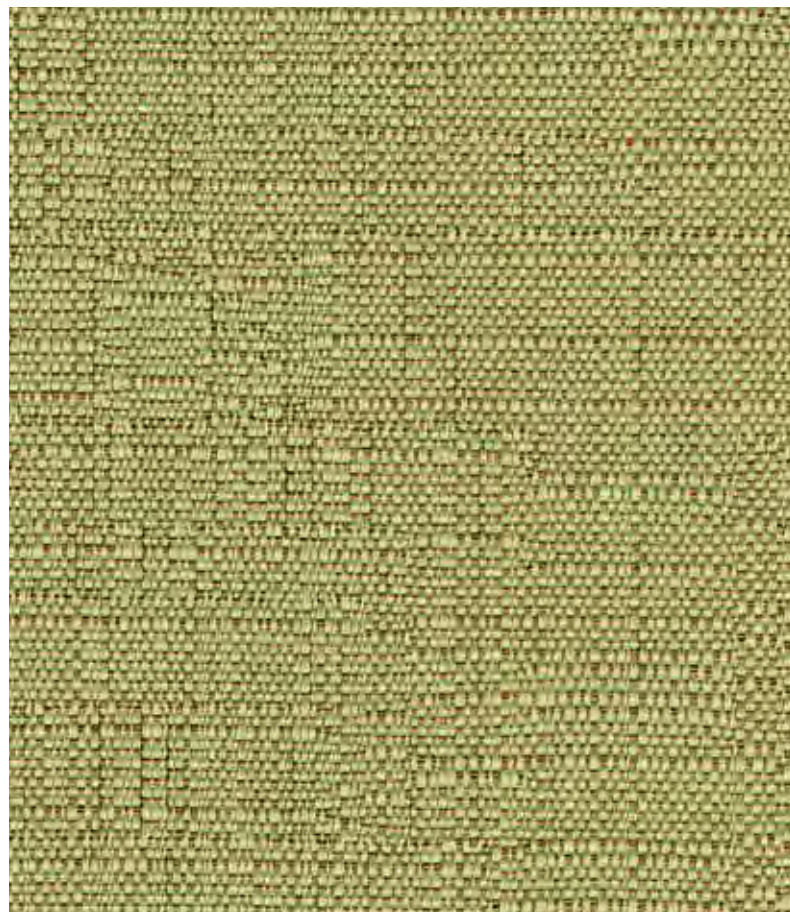
CASTAGNA (C14)



PRUGNA (C16)



ANICE (C10)



LIME (C11)



CORDONETTO CASTAGNA (C15)



CORDONETTO PRUGNA (C17)



BIANCO (05)



TITANIO (18)



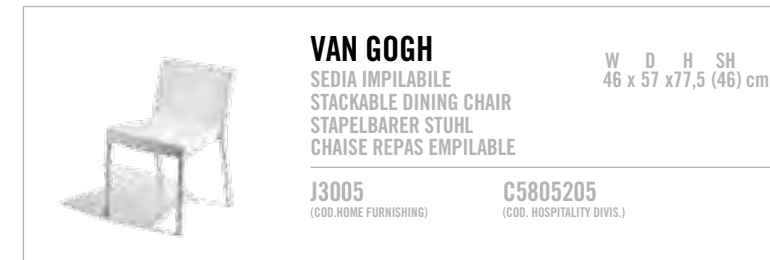
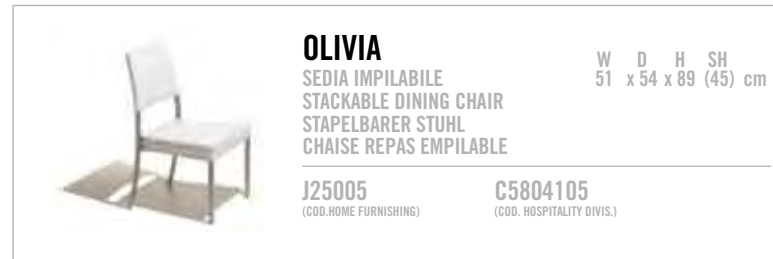
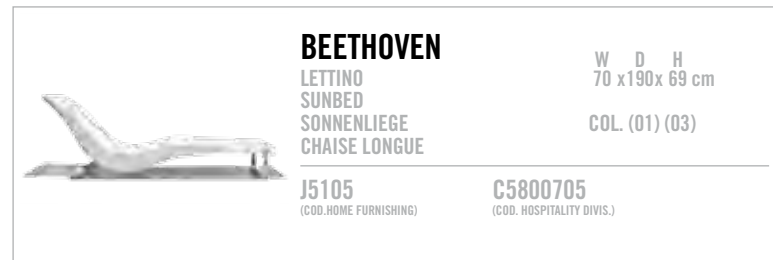
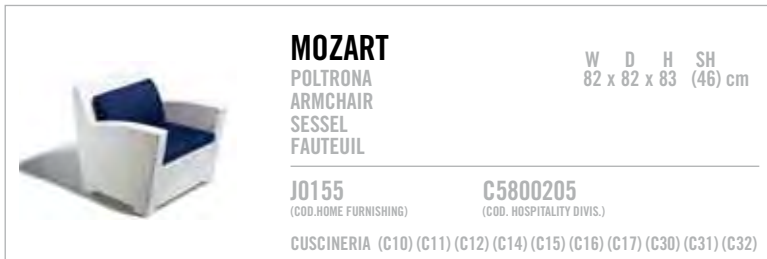
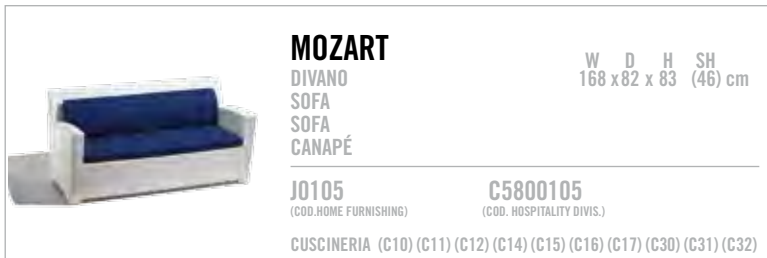
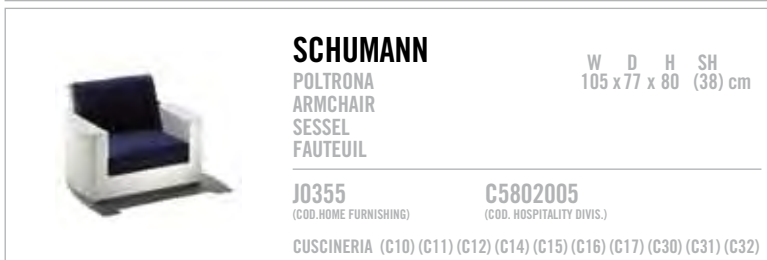
PERLA (17)

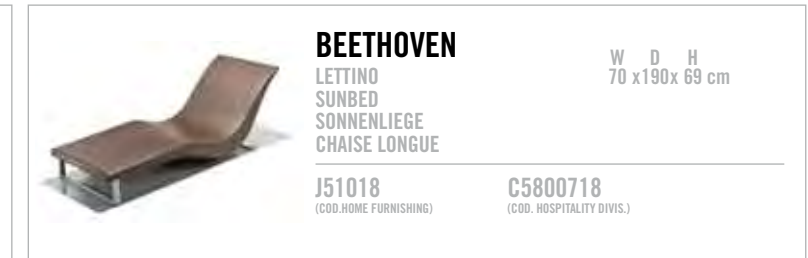
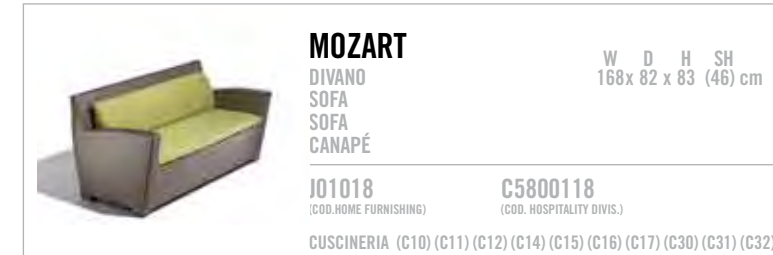
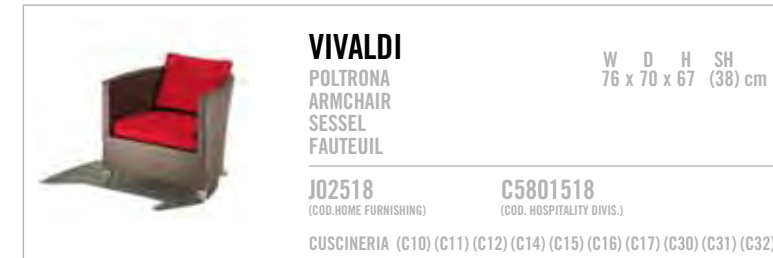
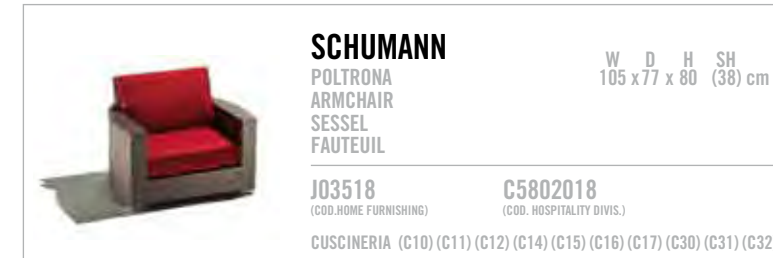
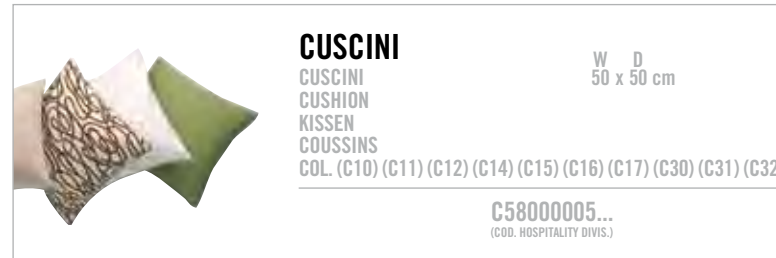
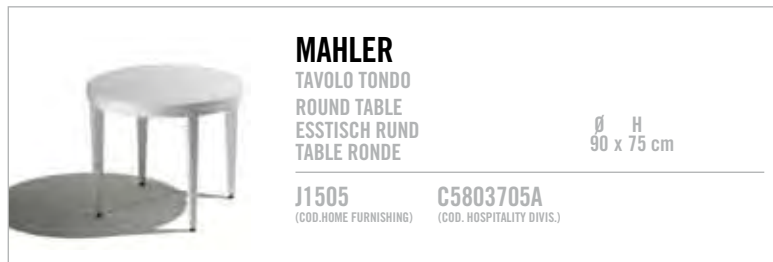


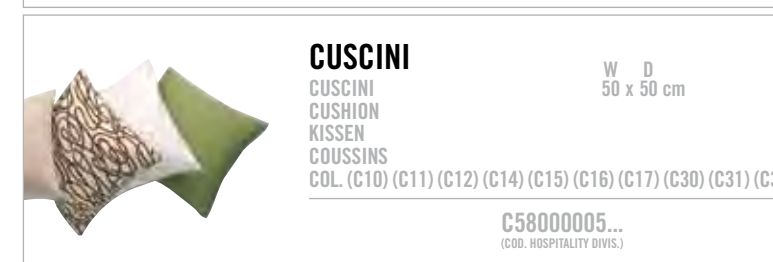
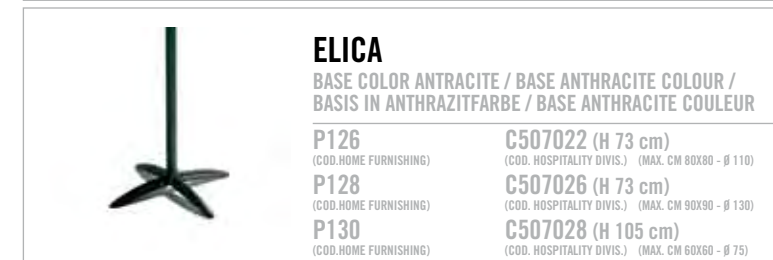
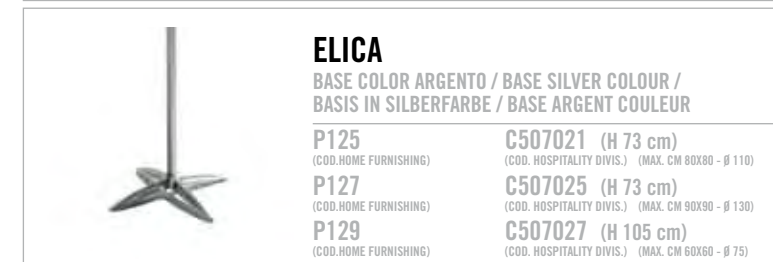
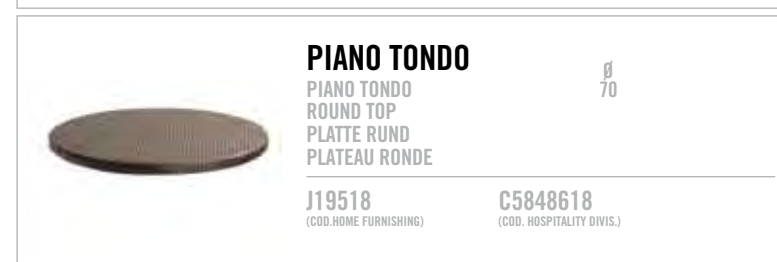
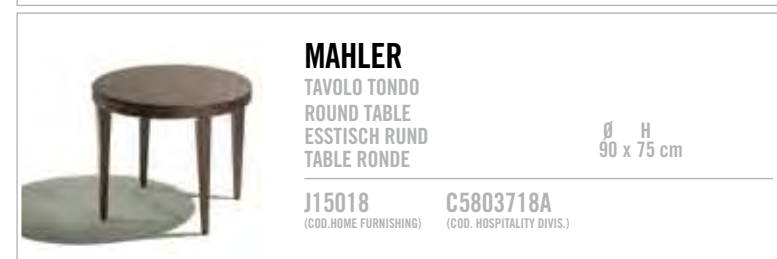
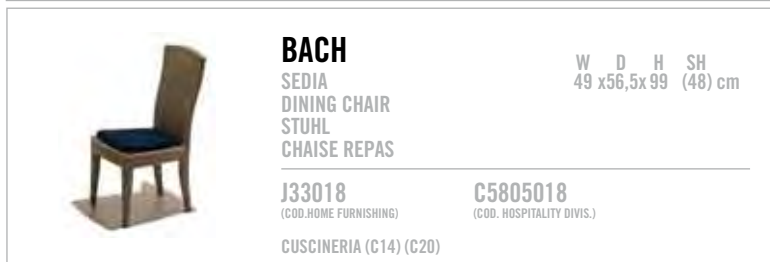
MARRONE (01)

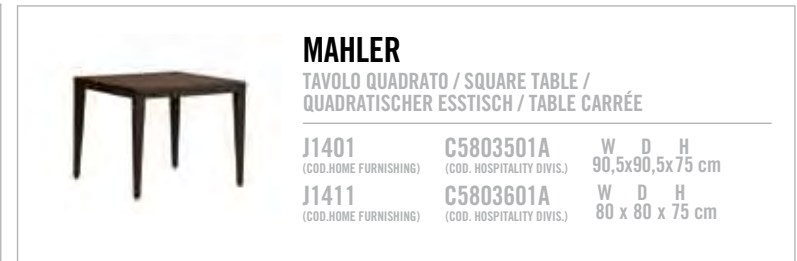
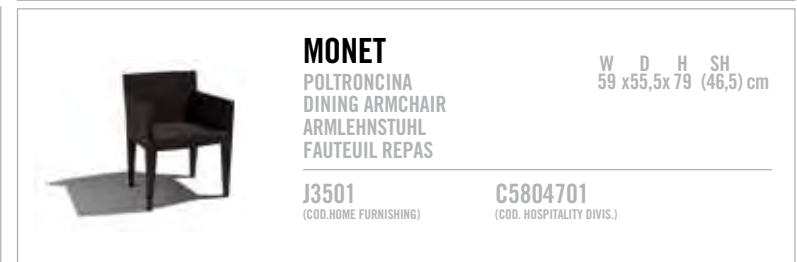
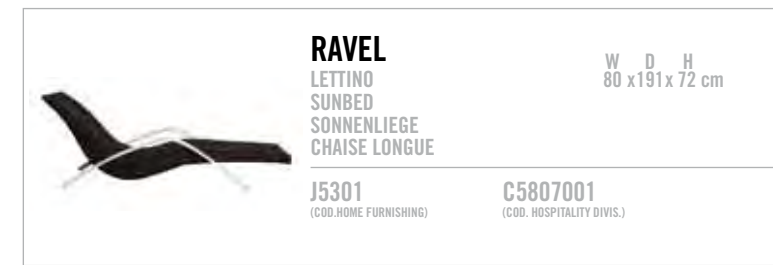
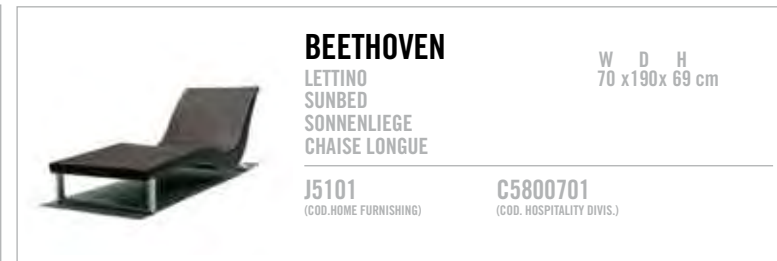
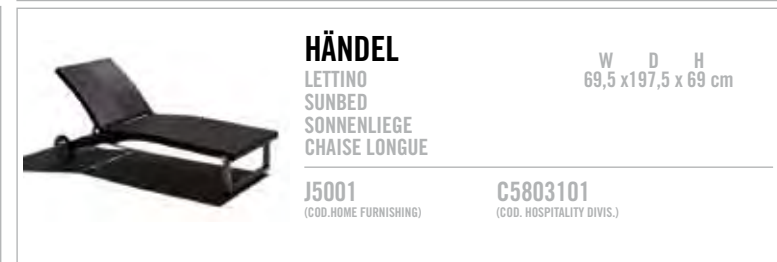
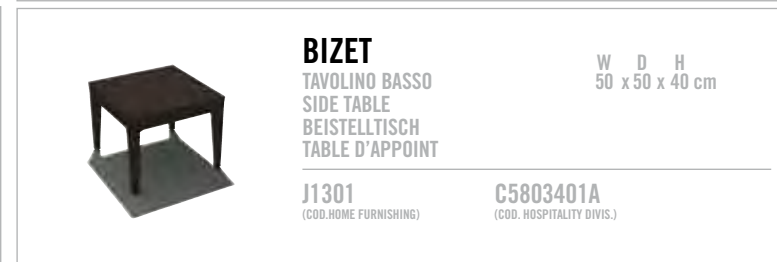
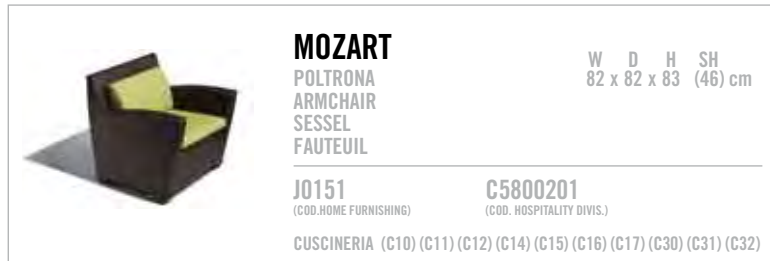
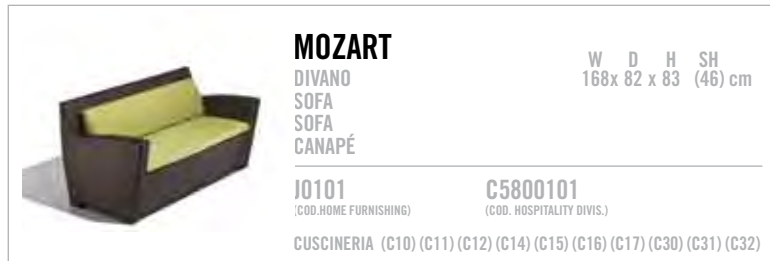
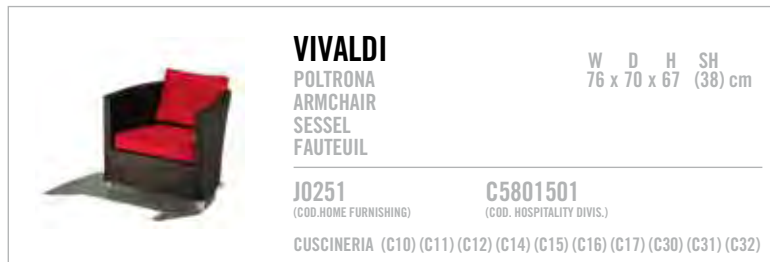
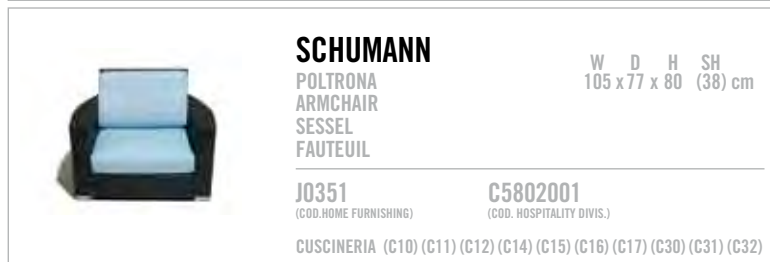
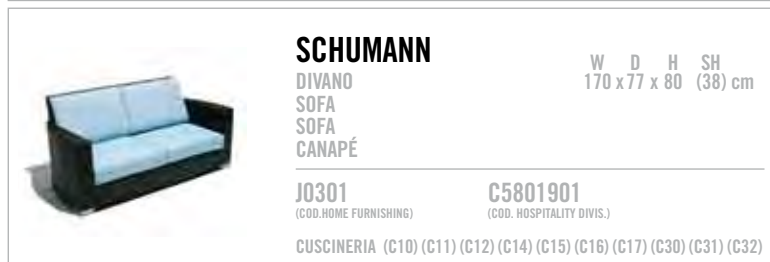


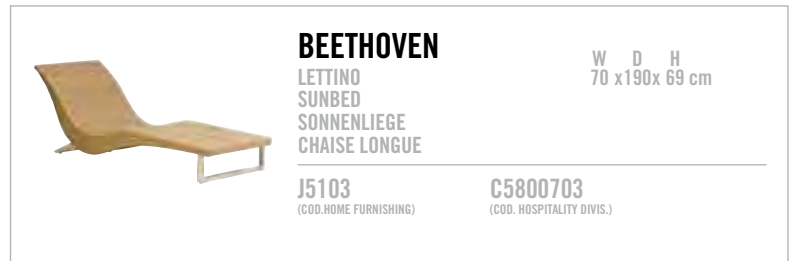
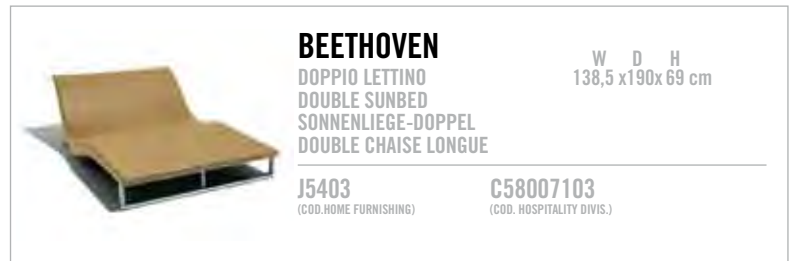
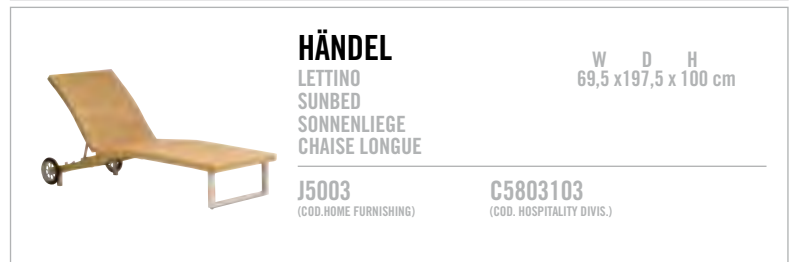
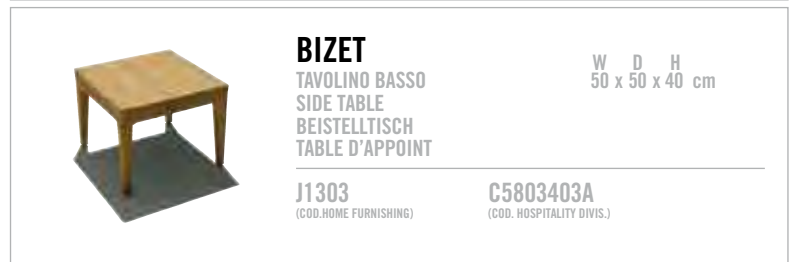
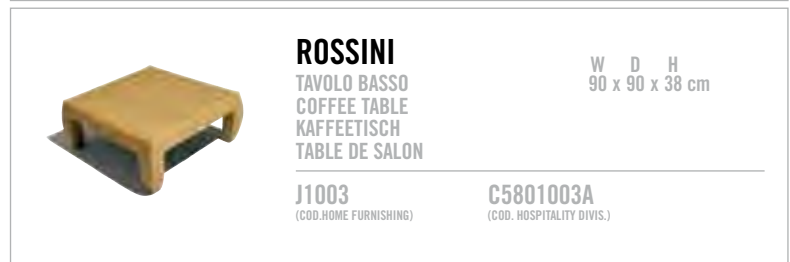
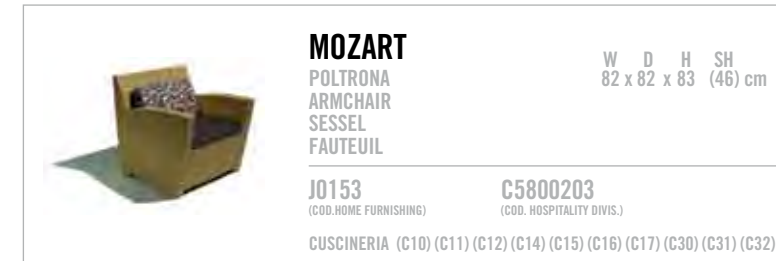
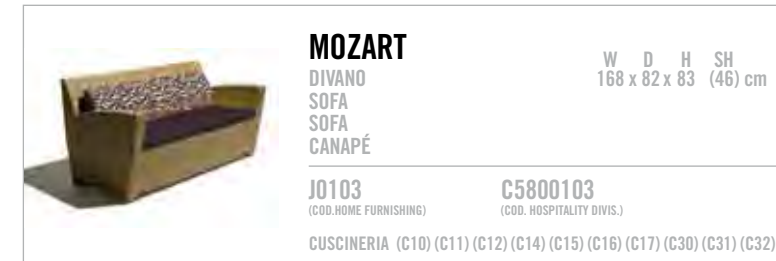
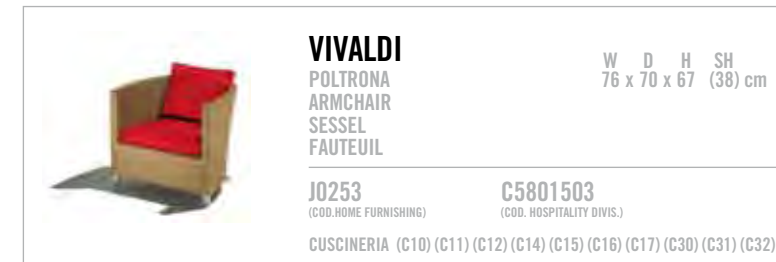
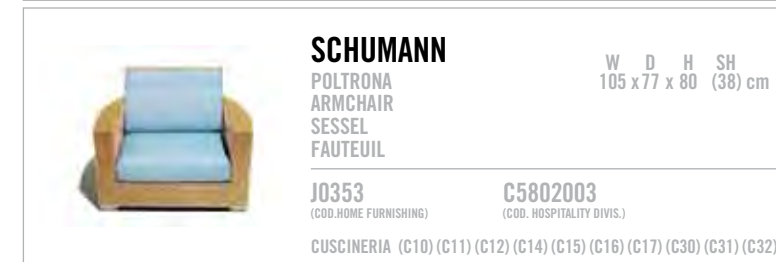
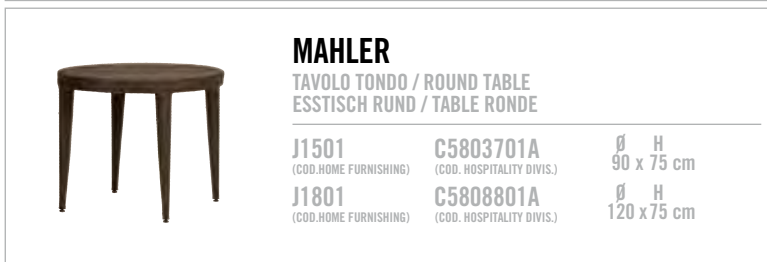
NATURALE (03)

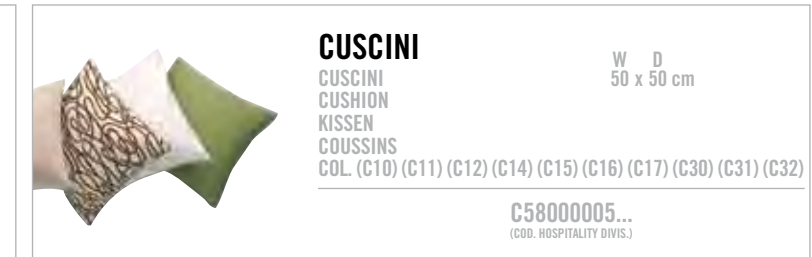
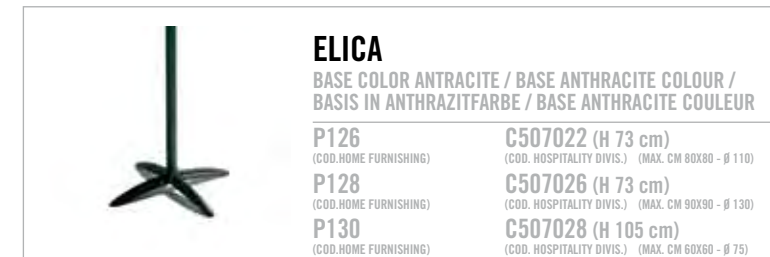
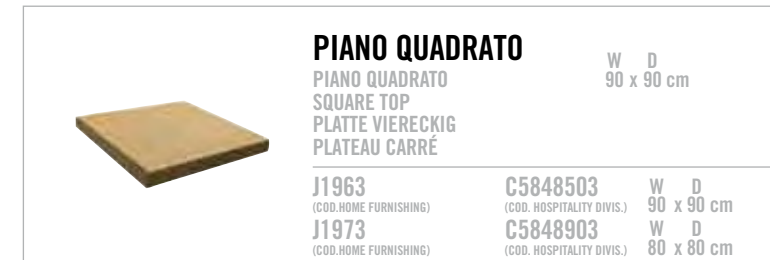
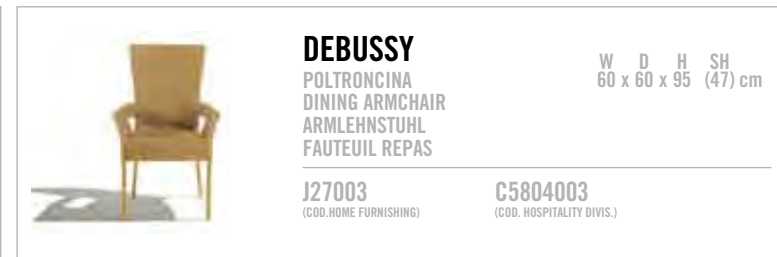
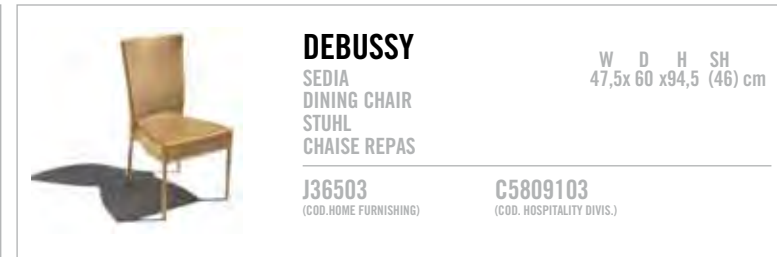
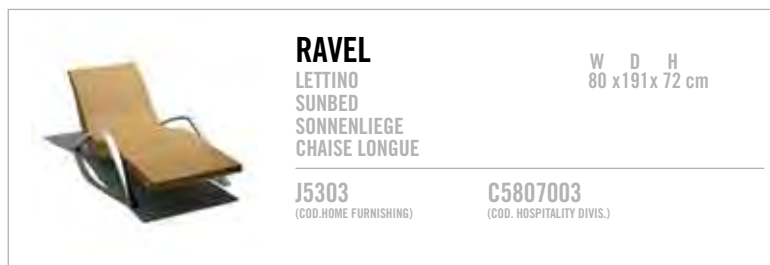


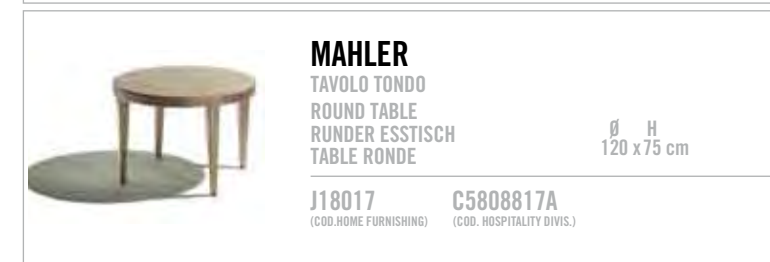
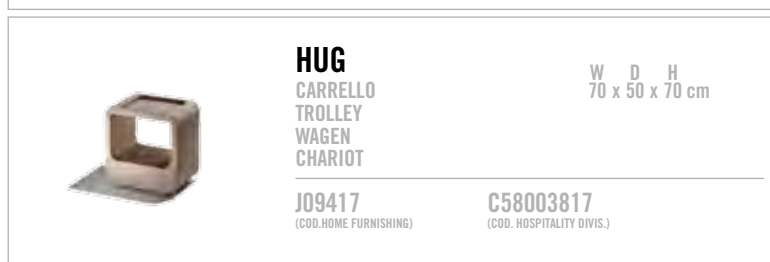














MARRONE (01)



BONANO (06)



AZUR MULTICOLOR (07)



RED MULTICOLOR (13)



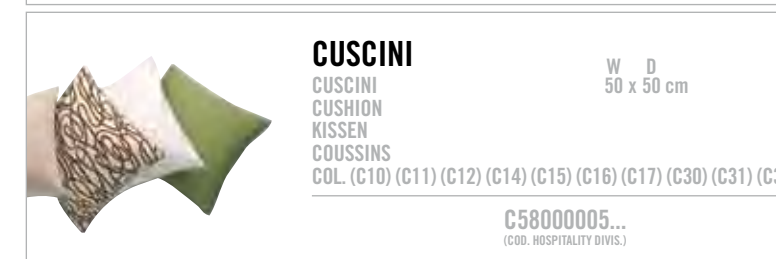
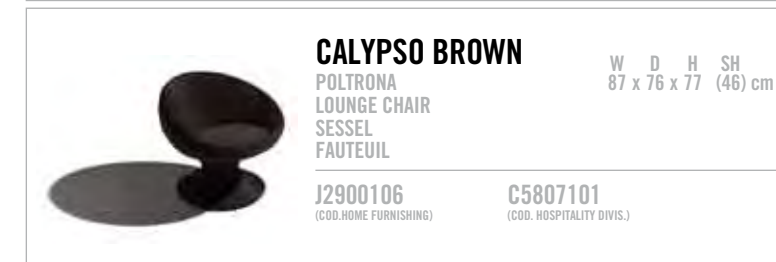
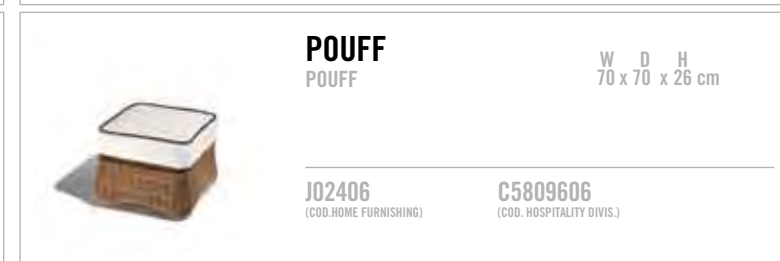
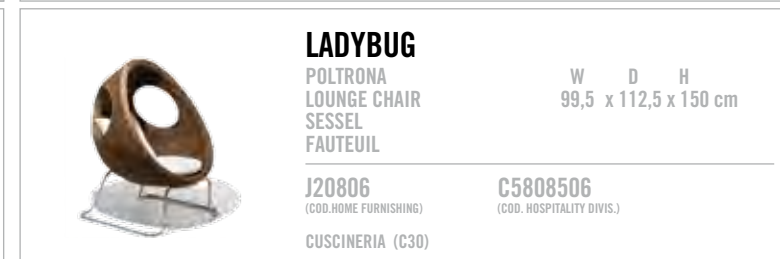
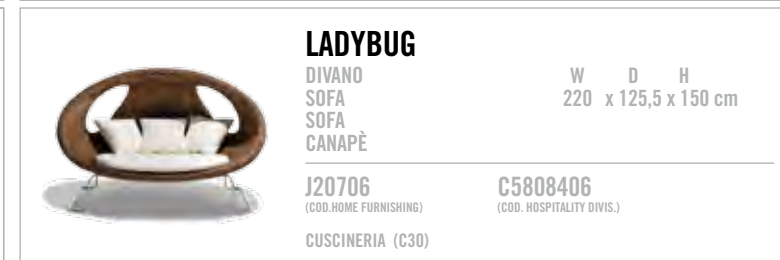
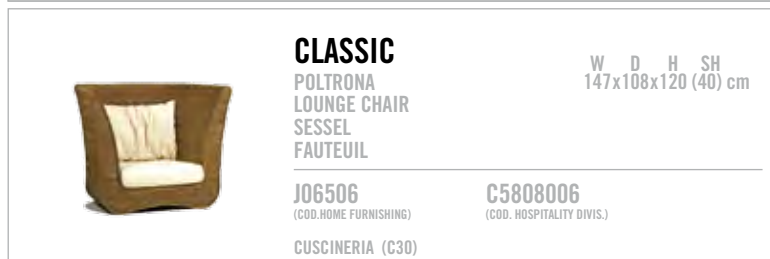
TIGER BICOLOR (08)



TIGER (15)



GREEN MULTICOLOR (14)





DIVANO E POLTRONA CON STRUTTURA IN FRASSINO MASSELLO E TUBOLARI IN ACCIAIO, PARTE STRUTTURALE DEL SEDILE E DELLO SCHIENALE COSTITUITA DA CINGHIE LARGHE 50 MM CON CUSCINI AMOVIBILI, VERNICIATURA AD ALTA RESISTENZA.

SOFA AND ARMCHAIR WITH SOLID ASH AND STEEL PIPE FRAME, THE STRUCTURAL PART OF THE SEAT AND BACKREST IS MADE OF 50 MM-WIDESTRAPS WITH REMOVABLE CUSHIONS, WITH HIGH-RESISTANCE PAINT FINISH.

SOFA UND SESSEL MIT GESTELL AUS MASSIVEM ESCHENHOLZ UND STAHLROHREN, TRAGENDE ELEMENTE DER SITZFLÄCHE UND DER LEHNE AUS 50 MM BREITEN GURTEN MIT ENTFERNBAREN KISSEN, HOCHFESTE LACKIERUNG.

CANAPÉ ET FAUTEUIL AVEC STRUCTURE EN FRÊNE MASSIF ET TUBES EN ACIER, PIÈCE STRUCTURALE DE L'ASSISE ET DU DOSSIER CONSTITUÉE DE SANGLES DE 50 MM DE LARGEUR AVEC COUSSINS AMOVIBLES, VERNISSAGE HAUTE RÉSISTANCE.






TAVOLO CON STRUTTURA IN FRASSINO MASSELLO, PARTE SUPERIORE CON PANNELLO LAMINAM DELLO SPESSORE DI 3 MM, VERNICIATURA AD ALTA RESISTENZA.

TABLE WITH SOLID ASH STRUCTURE, TOP FINISHED WITH A 3 MM THICK LAYER OF LAMINAM, HIGH-RESISTANCE PAINT FINISH.

TISCH MIT GESTELL AUS MASSIVEM ESCHENHOLZ, OBERSEITE MIT 3 MM STARKER LAMINAM-SCHEIBE, HOCHFESTE LACKIERUNG.

TABLE AVEC STRUCTURE EN FRÊNE MASSIF, SUR LA PARTIE SUPÉRIEURE FINITION AVEC UNE FEUILLE LAMINAM DE 3 MM D'ÉPAISSEUR, VERNISSAGE HAUTE RÉSISTANCE.

	BALI DIVANO SOFA SOFA CANAPÉ	W D H 214 x110x57,5 cm
	S100 (COD. HOME FURNISHING)	C507100 (COD. HOSPITALITY DIVIS.)
	BALI POLTRONA ARMCHAIR SESSEL FAUTEUIL	W D H 118,5 x110 x57,5 cm
	S200 (COD. HOME FURNISHING)	C507100 (COD. HOSPITALITY DIVIS.)
	BALI TAVOLINO COFFEE TABLE KAFFEETISCH TABLE DE SALON	W D H 120 x120 x44 cm
	S300 (COD. HOME FURNISHING)	C507120 (COD. HOSPITALITY DIVIS.)



OUTDOOR PALISSANDRO E TEAK

PROTETTIVO

Ha una formula protettiva a base d'acqua che aiuta a mantenere più a lungo il colore originale del legno.

Water-based protective formula which maintains the original color of the wood.

DETERGENTE

Agente pulente ad alta concentrazione e resa. Contiene specifici componenti lucidanti. E' a base d'acqua. Non pulisce solo in superficie, ma penetra in profondità nel legno, per una pulizia più duratura.

Highly concentrated, high-performance, water-based cleaning agent, containing special brightening ingredients. It does more than clean surfaces since it penetrates deeply into wood for a longer-lasting cleaning job.

PATINA PROTETTIVA

Speciale composto di polimeri sintetici a base d'acqua. Non attaccabile dallo sporco e dal grasso. Mantiene una protezione totale per lungo tempo (almeno due anni). Protegge dalle muffe. E' stabile anche rispetto ai raggi UV.

Special mix of water-based synthetic polymers. Dirt and moisture repellent. Offers long time total protection (at least two years). Protects against mildew. UV-stable.

IMPERMEABILIZZANTE ANTIMACCHIA

Soluzione di polimeri ad alta resa che previene le macchie sul legno. Sigillante non attaccabile dallo sporco e dal grasso. Praticamente invisibile; penetra profondamente nel legno, è a base d'acqua.

Almost invisible, high performance, water-based, polymer solution which prevents spotting on wood by penetrating deeply into the teak. Dirt and moisture repellent sealer.

KIT MANUTENZIONE TEAK


Il kit di manutenzione contiene un prodotto per il ripristino del colore naturale del legno ossidato grigio, un prodotto protezione per il mantenimento del colore del legno e gli accessori necessari al trattamento. I prodotti sono a base di acqua e per questo eco-compatibili.

The maintenance kit contains cleaner, protector and application tools. All products are water-based and environment-friendly.



PROTETTIVO
PROTECTOR

C509001 1 lt. C5090005 3 lt.




DETERGENTE
CLEANSER

C509002 1 lt.




PATINA PROTETTIVA
PATINA PROTECTOR

C509003 1 lt.



IMPERMEABILIZZANTE ANTIMACCHIA
ANTISTAIN WATERPROOFER

C509004 0,5 lt.



KIT MANUTENZIONE TEAK
TEAK MAINTENANCE KIT

C509000

DECOLORAZIONE DEL TEAK NEL TEMPO / FADING OF TEAK OVER TIME

0 MESI / MONTHS 2 4 6 8 10 12 14 16 18 20 22 24

Senza alcun intervento. / <i>When you do nothing.</i>	TEAK NUOVO / NEW TEAK				
Se vuoi mantenere il colore della patina grigia del Teak. / <i>When you wish to maintain the patina gray colour of Teak</i>	PATINA PATINIZER TEAK NUOVO / NEW TEAK				
Se vuoi mantenere il colore tipico del Teak. / <i>When you wish to maintain the original colour of Teak</i>	PROTETTIVO PROTECTOR	PROTETTIVO PROTECTOR	DETERGENTE CLEANER	PROTETTIVO PROTECTOR	PROTETTIVO PROTECTOR
Se non hai prestato alcun intervento e vuoi riportare il Teak alla sua patina grigia. / <i>When you do nothing and want to restore the Teak into its patina grey colour.</i>	TEAK VECCHIO / OLD TEAK			DETERGENTE CLEANER	PATINA PATINIZER
Se non hai prestato alcun intervento e vuoi riportare il Teak alla suo colore originale. / <i>When you do nothing and want to restore the Teak into its original colour.</i>	TEAK VECCHIO / OLD TEAK			DETERGENTE CLEANER	PROTETTIVO PROTECTOR



PALISSANDRO INDIANO / INDIAN ROSEWOOD



TEAK / TEAK



VENERE
 SEDIA IMPILABILE
 STACKABLE DINING CHAIR
 STAPELBARER STUHL
 CHAISE REPAS EMPILABLE

W D H SH
 51 x 54 x 89 (46) cm

P010 (COD. HOME FURNISHING) C507015 (COD. HOSPITALITY DIVIS.)



PIANO PALISSANDRO
 PIANO QUADRATO
 SQUARE TOP
 QUADRATISCHE PLATTE
 PLATEAU CARRÉ

W D
 80 x 80 cm

P120 (COD. HOME FURNISHING) C507024 (COD. HOSPITALITY DIVIS.)



VENERE
 POLTRONCINA IMPILABILE
 STACKABLE DINING ARMCHAIR
 STAPELBARER ARMSTUHL
 FAUTEUIL REPAS EMPILABLE

W D H SH
 60 x 54 x 89 (45) cm

P020 (COD. HOME FURNISHING) C507016 (COD. HOSPITALITY DIVIS.)



ELICA
 BASE COLOR ARGENTO / BASE SILVER COLOUR /
 BASIS IN SILBERFARBE / BASE ARGENT COULEUR

P125 (COD. HOME FURNISHING) C507021 (H 73 cm) (COD. HOSPITALITY DIVIS.) (MAX. CM 80x80 - Ø 110)



HALLEY
 SUNLOUNGER IMPILABILE
 STACKABLE SUNLOUNGER
 STAPELBARER SUNLOUNGER
 SUNLOUNGER EMPILABLE

W D H
 44 x 109 x 81 cm

P030 (COD. HOME FURNISHING) C507020 (COD. HOSPITALITY DIVIS.)



ELICA
 BASE COLOR ANTRACITE / BASE ANTHRACITE COLOUR /
 BASIS IN ANTHRACITFARBE / BASE ANTHRACITE COULEUR

P126 (COD. HOME FURNISHING) C507022 (H 73 cm) (COD. HOSPITALITY DIVIS.) (MAX. CM 80x80 - Ø 110)



PERSEO
 LETTINO
 SUNBED
 SONNENLIEGE
 CHAISE LONGUE

W D H
 82 x 200 x 83 cm

P500 (COD. HOME FURNISHING) C507017 (COD. HOSPITALITY DIVIS.)



OMBRELLONE A PALO CENTRALE (ECRÙ)
 OMBRELLONE A PALO CENTRALE / UMBRELLA WITH CENTRAL ARM /
 SONNENSCHIRM MIT ZENTRALEM ARM / PARASOL AVEC BRAS CENTRAL


P128 (COD. HOME FURNISHING) C66001 (300 x 300 x H 270 cm) (COD. HOSPITALITY DIVIS.)
 P130 (COD. HOME FURNISHING) C66020 (300 x 400 x H 270 cm) (COD. HOSPITALITY DIVIS.)
 P132 (COD. HOME FURNISHING) C66080 (200 x 200 x H 270 cm) (COD. HOSPITALITY DIVIS.)



VEGA
 TAVOLINO BASSO
 SIDE TABLE
 BEISTELLTISCH
 TABLE DE SALON

W D H
 50 x 50 x 45 cm

P510 (COD. HOME FURNISHING) C507029 (COD. HOSPITALITY DIVIS.)



BASE IN CEMENTO
 BASE IN CEMENTO
 CEMENT BASE
 BASIS AUS ZEMENT
 BASE EN CEMENT

P134 (COD. HOME FURNISHING) C66200 (COD. HOSPITALITY DIVIS.)



PEGASO
 TAVOLO QUADRATO
 SQUARE TABLE
 QUADRATISCHER ESSTISCH
 TABLE CARRÉ

W D H
 100x100x 76 cm

P100 (COD. HOME FURNISHING) C507018 (COD. HOSPITALITY DIVIS.)



OMBRELLONE A BRACCIO (ECRÙ)
 OMBRELLONE A BRACCIO
 SIDE ARM UMBRELLA
 SEITENARMSCHIRM
 PARASOL AVEC BRAS EXCENTRE'

P136 (COD. HOME FURNISHING) C66090 (300 x 300 x H 330 cm) (COD. HOSPITALITY DIVIS.)
 P140 (COD. HOME FURNISHING) C66100 (300 x 300 x H 330 cm) (COD. HOSPITALITY DIVIS.)



PEGASO
 TAVOLO RETTANGOLARE
 RECTANGULAR TABLE
 RECHTECKIGER ESSTISCH
 TABLE RECTANGULAIRE

W D H
 200 x 100 x 76 cm

P101 (COD. HOME FURNISHING) C507023 (COD. HOSPITALITY DIVIS.)



OMBRELLONE A BRACCIO (BLUE NAVY)
 OMBRELLONE A BRACCIO
 SIDE ARM UMBRELLA
 SEITENARMSCHIRM
 PARASOL AVEC BRAS EXCENTRE'

P138 (COD. HOME FURNISHING) C66091 (300 x 300 x H 330 cm) (COD. HOSPITALITY DIVIS.)
 P142 (COD. HOME FURNISHING) C66101 (300 x 300 x H 330 cm) (COD. HOSPITALITY DIVIS.)



BASE IN METALLO
 BASE IN METALLO
 METAL PLATE
 BASIS AUS METAL
 BASE EN METAL


P144 (COD. HOME FURNISHING) C66220 (COD. HOSPITALITY DIVIS.)



QUASAR
 TAVOLO QUADRATO
 RECTANGULAR TABLE
 QUADRATISCHER ESSTISCH
 TABLE CARRÉ

W D H
 130 x 130 x 75 cm

T110 (COD. HOME FURNISHING) C507005 (COD. HOSPITALITY DIVIS.)



VENUS
 POLTRONCINA IMPILABILE
 STACKABLE ARMCHAIR
 STAPELBARER SESSEL
 FAUTEUIL EMPILABLE

W D H SH
 53 x 57 x 91 44,5 cm


T010 (COD. HOME FURNISHING) C507001 (COD. HOSPITALITY DIVIS.)



ESTENSIONE PER TAVOLO TITANO
 ESTENSIONE PER TAVOLO TITANO (2 PEZZI)
 EXTENSION FOR TABLE (2 PIECES)
 TISCHVERLÄNGERUNG (2 STÜCKE)
 RALLONGES (2 PIÈCES)

W D
 40 x 90 cm (2 pezzi)

T105 (COD. HOME FURNISHING) C507012 (COD. HOSPITALITY DIVIS.)



ANDROMEDA
 PANCA IMPILABILE
 STACKABLE BENCH
 STAPELBARER BANK
 BANC EMPILABLE

W D H SH
 106 x 57 x 91 44,5 cm

T020 (COD. HOME FURNISHING) C507002 (COD. HOSPITALITY DIVIS.)



PULSAR
 TAVOLINO QUADRATO
 SQUARE SIDE TABLE
 QUADRATISCHE BEISTELLTISCH
 TABLE D'APPOINT CARRÉ

W D H
 50 x 50 x 45 cm


T150 (COD. HOME FURNISHING) C507006 (COD. HOSPITALITY DIVIS.)



ORIONE
 SUNLOUNGER CON POGGIPIEDI
 SUNLOUNGER WITH LEG REST
 SONNENLIEGE MIT FUSSHOCKER
 CHAISE LONGUE AVEC REPOSE-PIEDS

W D H
 57 x 170 x 125


T508 (COD. HOME FURNISHING) C507003 (COD. HOSPITALITY DIVIS.)



TITANO
 TAVOLO QUADRATO
 SQUARE TABLE
 QUADRATISCHER ESSTISCH
 TABLE CARRÉ

W D H
 90 x 90 x 75 cm

T100 (COD. HOME FURNISHING) C507007 (COD. HOSPITALITY DIVIS.)



ORIONE
 SUNLOUNGER
 SUNLOUNGER
 SONNENLIEGE
 CHAISE LONGUE

W D H SH
 57 x 88 x 125 (37)cm


T500 (COD. HOME FURNISHING) C507010 (COD. HOSPITALITY DIVIS.)



LUNA
 SEDIA PIEGHEVOLE
 FOLDING CHAIR
 KLAPPSTUHL
 CHAISE PLIANTE

W D H SH
 41 x 55 x 97 (45,5) cm

T300 (COD. HOME FURNISHING) C507008 (COD. HOSPITALITY DIVIS.)



ORIONE
 POGGIPIEDI PER SUNLOUNGER
 LEG REST
 FUSSHOCKER
 REPOSE-PIEDS

W D H
 57 x 82 x 37 cm

T505 (COD. HOME FURNISHING) C507011 (COD. HOSPITALITY DIVIS.)



CASSIOPEA
 POLTRONCINA PIEGHEVOLE
 FOLDING ARMCHAIR
 KLAPPSTUHL
 CHAISE PLIANTE

W D H SH
 51 x 55 x 97 (45,5) cm

T310 (COD. HOME FURNISHING) C507009 (COD. HOSPITALITY DIVIS.)



SIRIO
 LETTINO DA SOLE
 SUNBED
 SONNENLIEGE
 CHAISE LONGUE

W D H SH
 200 x 60 x 30 (35) cm

T510 (COD. HOME FURNISHING) C507004 (COD. HOSPITALITY DIVIS.)



PULSAR
 TAVOLINO BASSO RETTANGOLARE
 RECTANGULAR TABLE
 RECHTECKIGER KAFFETISCH
 TABLE DE SALON RECTANGULAIRE

W D H
 120 x 60 x 45 cm

T155 (COD. HOME FURNISHING) C507014 (COD. HOSPITALITY DIVIS.)



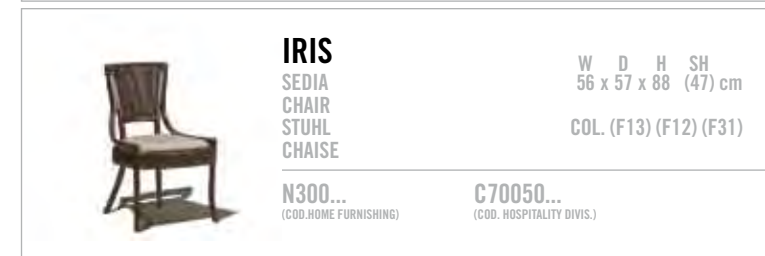
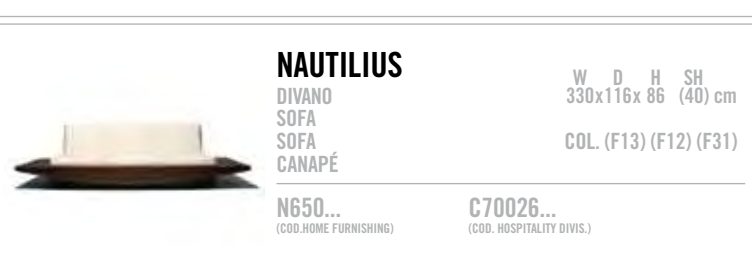
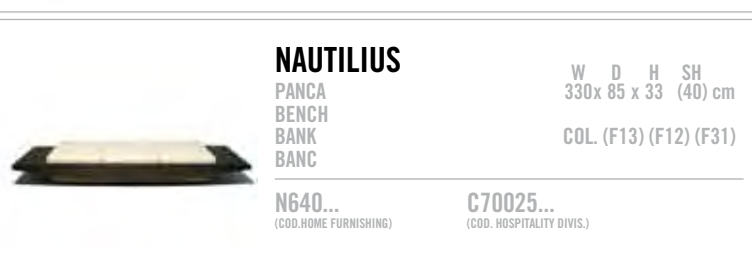
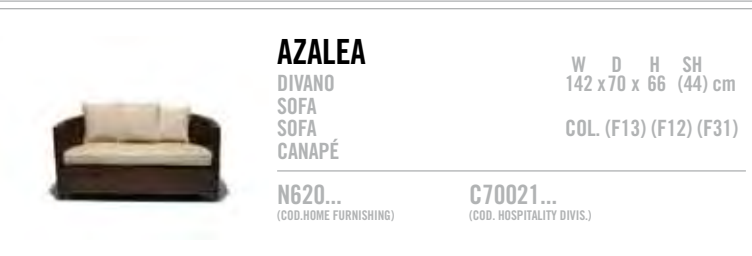
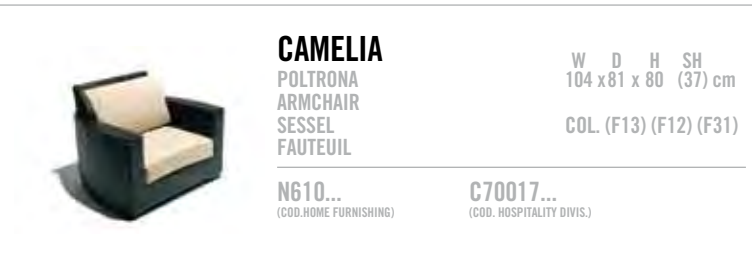
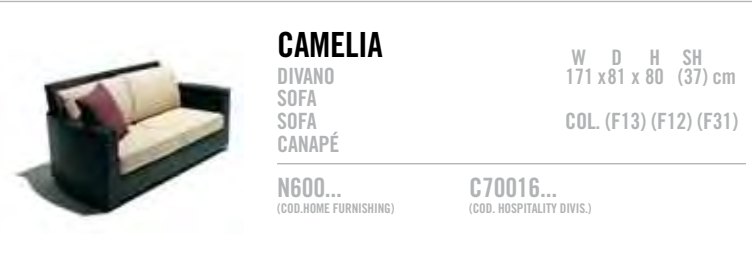
NOCE (F12)



CASTAGNA (F13)



LIQUIRIZIA (F31)





SF
LIFE

SchönhuberFranchi

SCHÖNHUBER FRANCHI SPA VIA BRUNO BUOZZI, 10 - 39100 BOLZANO ITALIA WWW.SCHÖNHUBERFRANCHI.COM SF@SCHÖNHUBERFRANCHI.COM NUMERO VERDE 800-850012

